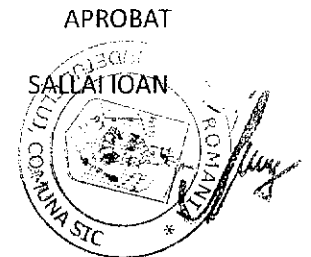
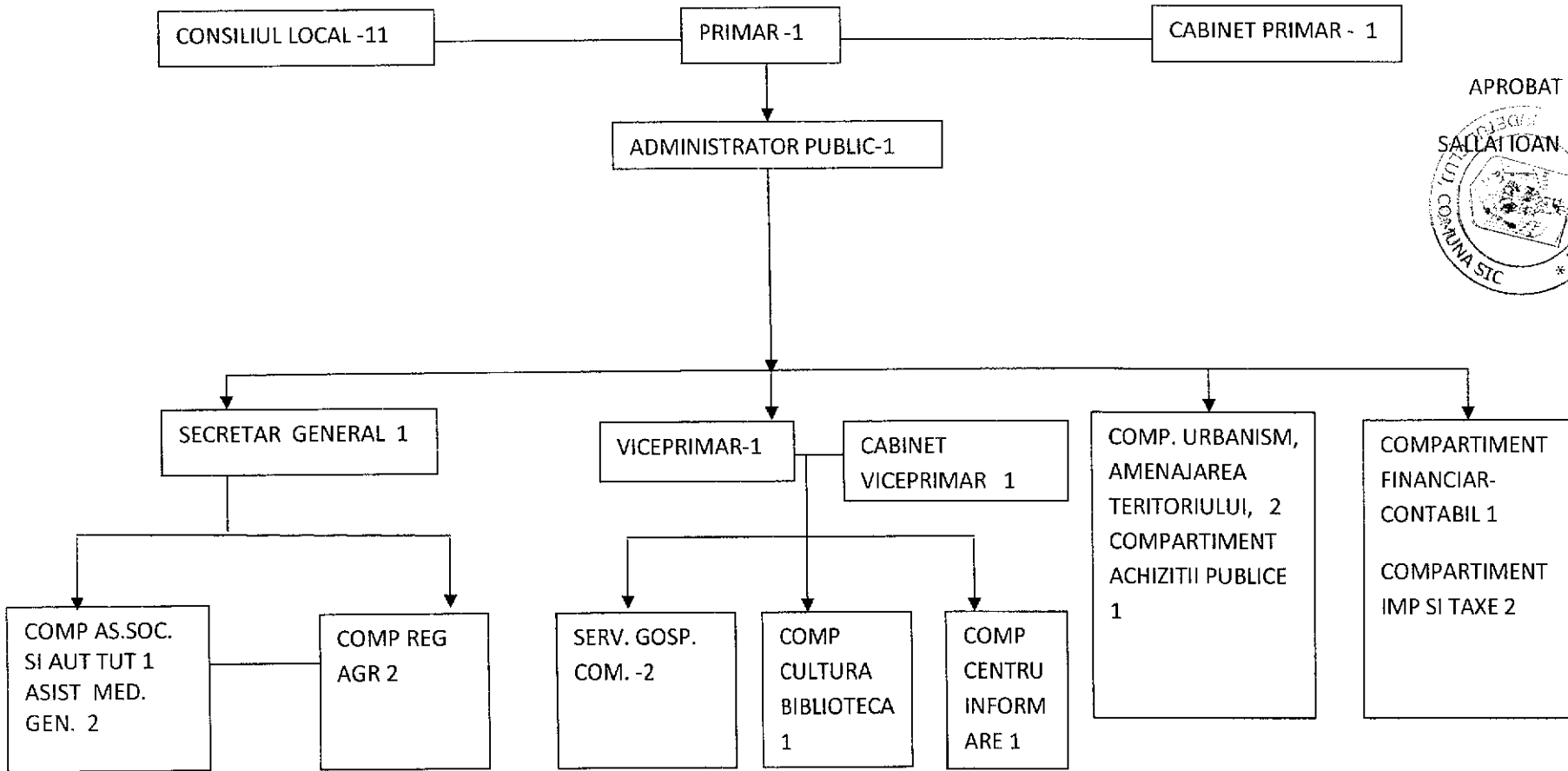


100

ORGANIGRAMA PRIMĂRIEI COMUNEI SIC



CONS. LOCAL- 11

PRIMAR- 1  
ADMINISTRATOR PUBLIC- 1

CABINET PRIMAR- 1  
SECRETAR- 1  
ASIST. MED. GEN. - 2

AS. SOCIALĂ- 1

REFERENT AGRICOL- 1  
FOND FUNCAR- 1

VICEPRIMAR- 1  
CABINET VICEPRIMAR -1

SERV.GOSP.-2

COMP.URBANISM -2  
ACHIZITII PUBLICE - 1  
COMP.CULTURA-BIBLIOT. 1

CENTRU INFORMATIC 1  
COMP.FIN-CONT. 1  
COMP.IMPOZITE SI TAXE 2

FUNCTIONARI PUBL. DE CONDUCERE

SECRETAR GENERAL 1  
EXECUTIE 5  
CONTRACTUAL 13  
DEMNITARI 2 + 11

TOTAL 21